

Nike Golf Elite Messenger TG0244



This premium messenger has a place for every necessity (including laptops and tablets) and looks modern thanks to the contrast welded Swoosh design trademark.

- 150 x 300D polyester/1,680D ballistic nylon
- 150D polyester lining
- Sturdy, padded grab handle
- Interior snap pockets
- Zippered front pocket on flap
- Padded main compartment
- Separate zippered, padded laptop sleeve
- Pullman handle attachment sleeve
- Two side pockets
- Adjustable, detachable, padded shoulder strap
- Organization panel
- Tablet sleeve dimensions: 10.5"h x 9.85"w
- Laptop sleeve dimensions: 16"h x 12"w x 1.25"d; fits most 15" laptops
- Dimensions: 16"h x 12"w x 6.75"d; Approx. 1,296 cubic inches



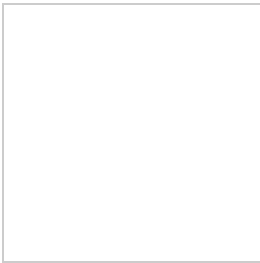
front

**Bags not intended for use by children 12 and under.*

CARE INSTRUCTIONS

Wipe clean with a damp cloth.

HOW TO MEASURE



BAGS

Measurements and decoration areas vary by bag.

SIZE CHART

	OSFA
Bags	N/A

COLOR INFORMATION



Anthracite/ Black Wolf Grey/ Silver
PMS 446 C PMS 429 C