



Block gusts and chill with our coordinating, water-repellent wind pants and jackets. Lightweight and breathable, this outerwear essential features contrasting piping details for true athletic style.

- 100% polyester
- Mesh lining
- Elastic waistband with drawcord
- Two front pockets
- Extended leg zippers
- Mesh lining above knees, poly lining below for easy on/off

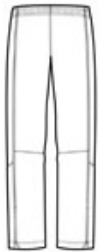
CARE INSTRUCTIONS

Machine wash cold on gentle cycle with like colors. Use mild detergent. Remove immediately. Do not allow to lay on itself when wet. Do not bleach. Tumble dry low. Cool iron if needed. Do not dry clean.

[Tips For Effectively Screen Printing Polyester Fabrics](#)

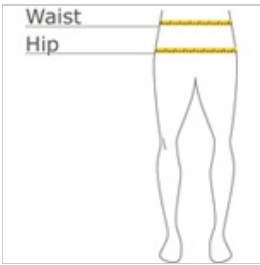


front



back

HOW TO MEASURE



WAIST

Measure at the natural waist, and keep tape comfortably loose.

HIPS

Stand with heels together, and measure around the fullest part of the hips.

SIZE CHART

	XS	S	M	L	XL	XXL	3XL	4XL
Size	2	4/6	8/10	12/14	16/18	20/22	24/26	28/30
Waist	24-26	27-28	29-30	31-33	34-36	37-39	40-43	44-47
Hip	34-36	37-38	39-40	41-43	44-46	47-49	50-53	54-57
Inseam	30 1/2	31	31 1/2	32	32 1/2	33	33	33

COLOR INFORMATION



Black/ White Graphite Grey/
 PMS NTR BLACK C White
 PMS 7540 C